

# Non-clogging Pump

STERLING

## DBS 3216...30040

### TECHNICAL DATA

Output:	up to 1200 m <sup>3</sup> /h
Delivery head:	up to 100 m
Speed:	up to 3600 rpm depending of the pump size and material execution
Medium temperature:	max. 110 °C
Casing pressure:	10 bar
Shaft sealing:	stuffing box or mechanical seal
Flange connections:	PN 10
Sense of rotation:	clockwise, when seen from the drive on the pump

### APPLICATION

Series DBS volute-casing pumps can be used where the requirement is for pumping dirty liquids or liquids with solids.

Sewage plants:	Storm water, pre-filtered sewage, industrial effluents
Chemical plants:	Chemical effluents, brines and lies, milk of lime, crystal sludge, filter material, plastic suspensions
Rolling mills:	Scale-contaminated water from steel and copper rolling mills
Foundries and iron and steel works:	Effluents and sludges from dust and arrester plants
Construction industry:	Mixtures of water and cement and water from excavation ditches
Paper and cellulose pulp industry:	Paper, chemical pulp and mechanical suspensions up to 6% absolutely dry
Sugar mills:	Carbonation juice, concentrated juice, milk of lime
Food industry:	Thick mash, fruit and potato slices (parings)

### DESIGN

Process type, single-stage, volute casing pumps with design features and nominal rating to ISO2858/EN22858 and enlarged sizes

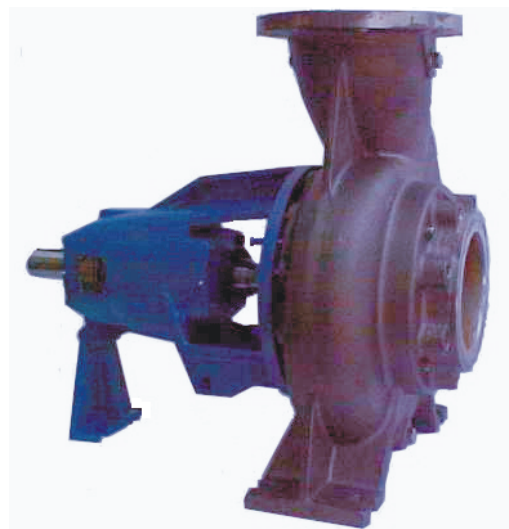
The process design permits dismantling of the complete bearing unit towards the drive end, without the pump casing having to be disconnected from the piping. If a spacer coupling is used it is also unnecessary to disconnect the motor.

### CONSTRUCTION

**Casing pressure:** Max. 10 bar between -10 °C and +120 °C  
Please note: Casing pressure = Inlet pressure + shut off head.  
Max. test pressure 16 bar

#### Branch positions:

Suction branch axial, discharge branch radial upwards.



#### Flanges:

Connection dimensions of flanges DIN 2501 PN 10 .  
Flanges can be supplied drilled to ANSI  
Optional the pump can be supplied with a flange adapter  
piece on the suction side (see sectional drawing, pos. 72.20)

#### Bearings:

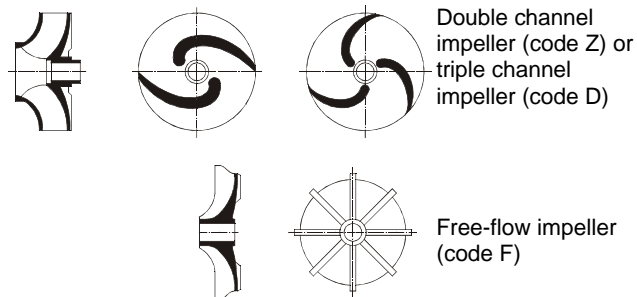
Execution B:  
Pump end: one cylindrical roller bearing to DIN 5412  
Drive end: one deep groove ball bearing to DIN 625  
The bearings are grease lubricated

Execution C:  
Pump end: one cylindrical roller bearing to DIN 5412  
Drive end: one deep groove ball bearing to DIN 625  
The bearings are oil lubricated

Execution S:  
Pump end: one cylindrical roller bearing to DIN 5412  
Drive end: two angular contact ball bearings in O-  
arrangement.  
The bearings are grease lubricated

Execution T:  
Pump end: one cylindrical roller bearing to DIN 5412  
Drive end: two angular contact ball bearings in O-  
arrangement.  
The bearings are oil lubricated

#### Shapes of impellers:



If required, the sealing clearance gap on the suction side of pumps fitted with double and triple channel and wear plates can be arranged for flushing.

**Shaft sealing:**

A stuffing box or a mechanical seal, as required, can affect the sealing of the shaft.

**Variants with stuffing box:**

- Designation 052: Uncooled stuffing box with external sealing (inlet only).  
Temperature range: -10 °C to 110° C.
- Designation 051: Uncooled stuffing box with external sealing and flushing  
Temperature range: -10° C to 110° C.
- Designation 071: Uncooled stuffing box with flushing upstream of packing and flushing between wear plate and impeller (only for double and twin channel impellers)  
Temperature range: -10° C to 110 °C

**Variants with mechanical seal:**

The installation with mechanical seal to DIN 24960 is possible in all versions described there, as a single mechanical seal, double mechanical seal and mechanical seal with a stationary spring element.  
Double mechanical seals can be mounted in back-to-back or tandem arrangement.

Designation BKW: Unbalanced mechanical seal,  
Materials: SiC-SiC- Perbunan®  
Temperature range: -20...+ 120 °C

Designation BKS: Unbalanced mechanical seal  
Materials: SiC-SiC-Viton®  
Temperature range: -20...+ 120 °C

Other shaft seals upon request.

**MATERIAL EXECUTION:**

Pos.	ITEMS	Material execution		
		0B	0E	4B
10.20	Casing	Cast iron		Stainless steel
13.50	Wear plate	Cast iron	Stainless steel	
16.10	Casing cover	Cast iron		
21.10	Shaft	Carbon steel		
23.00	Impeller	Cast iron	Stainless steel	
33.00	Bearing bracket	Cast iron		
52.30	Shaft sleeve mechanical seal	Stainless steel		
52.40	Shaft sleeve stuffing box			

Other materials on request

**Casing seal:**

The casing is sealed by flat gasket IT 400.

**Drive / Speed:**

By commercial electric motors, type of construction motor, IM B3.

For the determination of the drive power we recommend the following additions:

Up to 4 kW: 25%

4 up to 7,5 kW: 20%

from 7,5 kW: 15%

The following speeds limits are to be observed:

Max. Speed rpm	Size	Max. speed rpm	Size	Max. speed rpm	Size	Max. speed rpm	Size
3600	3216F 3220F 4016F/D 4020F/D 5016F/D 5020F/Z 6520F/Z	3000	5026F/D 8026F/Z 10026F/Z	1800	5032F/Z 8032F/Z 8040Z 10032F/D 12540F/D 15032Z 20032D 20040D	1500	12550D 20050D
						960	30040D

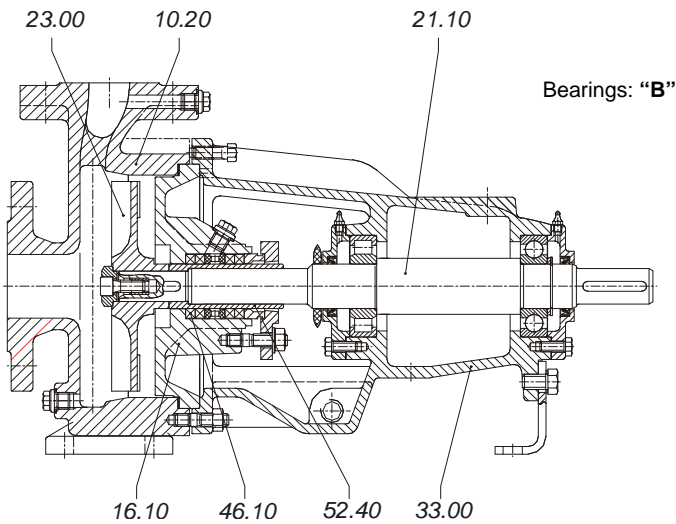
The max. speed result from the admissible shaft load and the admissible peripheral speed of the impellers

$$\text{Maximum permissible shaft load} = \frac{P_N \text{ in (kW)}}{n \text{ in (rpm)}}$$

Shaft	Carbon steel	Stainless steel	Shaft	Carbon steel	Stainless steel
35	0,011	0,008	65	0,10	0,08
45	0,022	0,016	75	0,18	0,14
55	0,052	0,040			

SECTIONAL DRAWINGS AND PARTS LIST

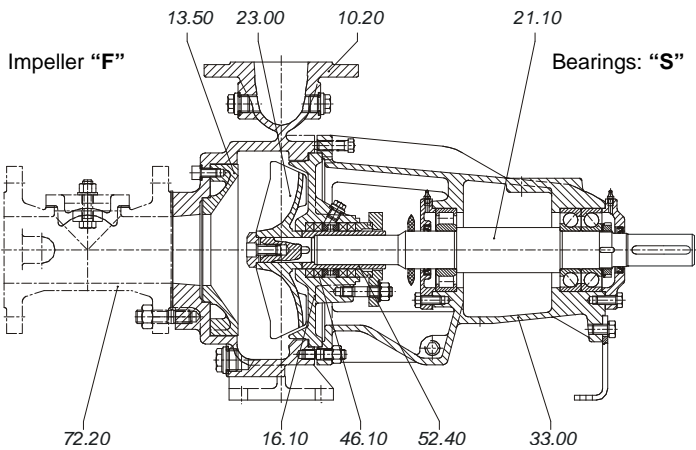
Only for DBSA 3216F and DBSA 3220F  
(without wear plate)



- 10.20 Casing
- 16.10 Casing cover
- 33.00 Bearing bracket
- 21.10 Shaft
- 23.00 Impeller
- 46.10 Stuffing box
- 52.40 Shaft sleeve

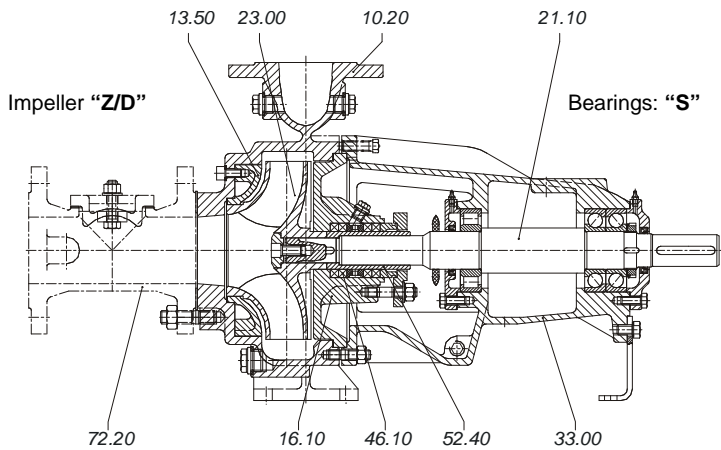
Shaft sealing design 052

Remaining pumps sizes

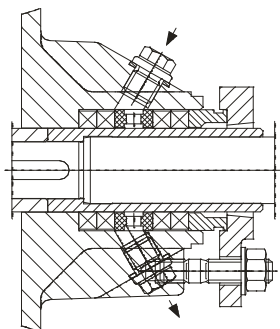


- 10.20 Casing
- 13.50 Wear plate
- 16.10 Casing cover
- 33.00 Bearing bracket
- 21.10 Shaft
- 23.00 Impeller
- 46.10 Stuffing box
- 52.40 Shaft sleeve
- 72.20 Adapter piece

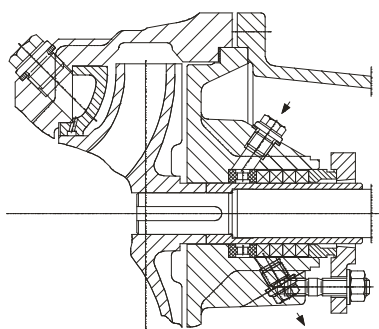
Shaft sealing design 052



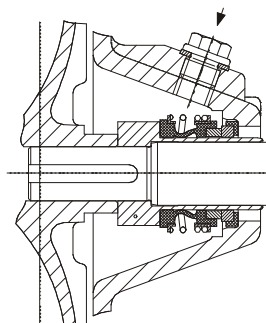
## Types of shaft sealings



**Designation 051:** Uncooled stuffing box with external sealing and flushing. Temperature range: -10°C to 110°C

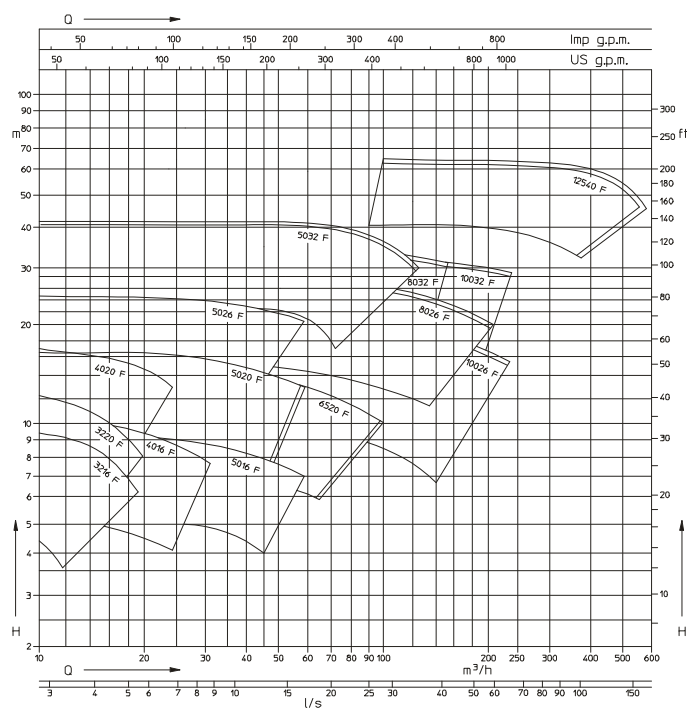


**Designation 071:** Uncooled stuffing box with flushing upstream of packing and flushing between wear plate and impeller. Temperature range: -10°C to 110°C

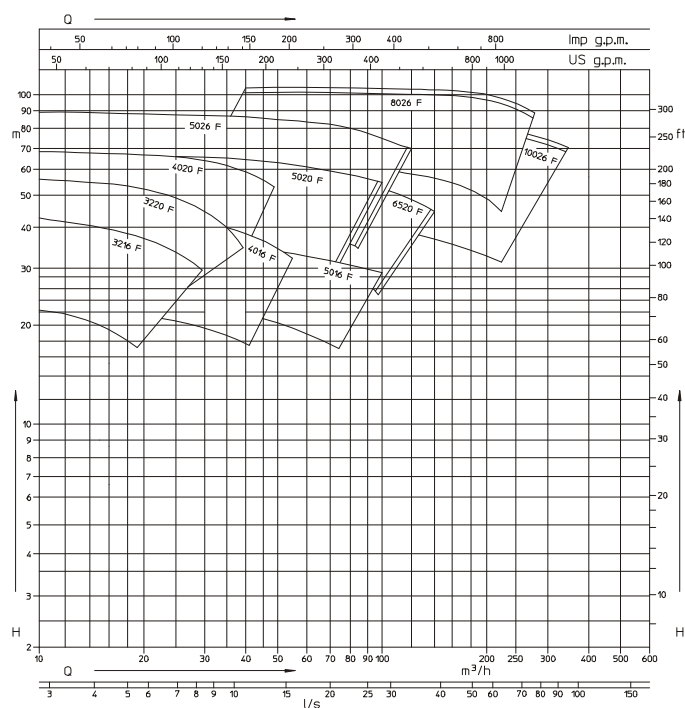


**Mechanical seal**

## PERFORMANCE GRAPHS

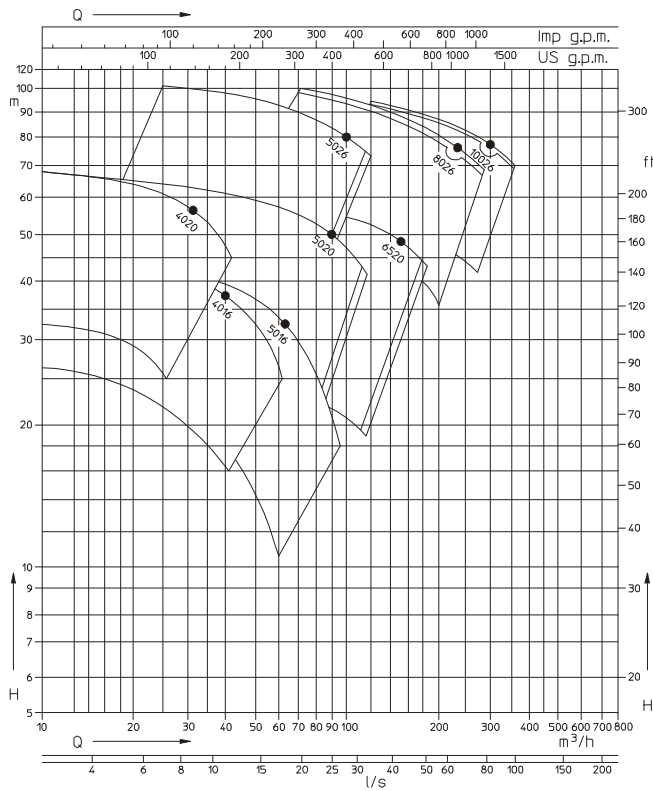


Pumps with free flow impeller "F"  
1450 rpm

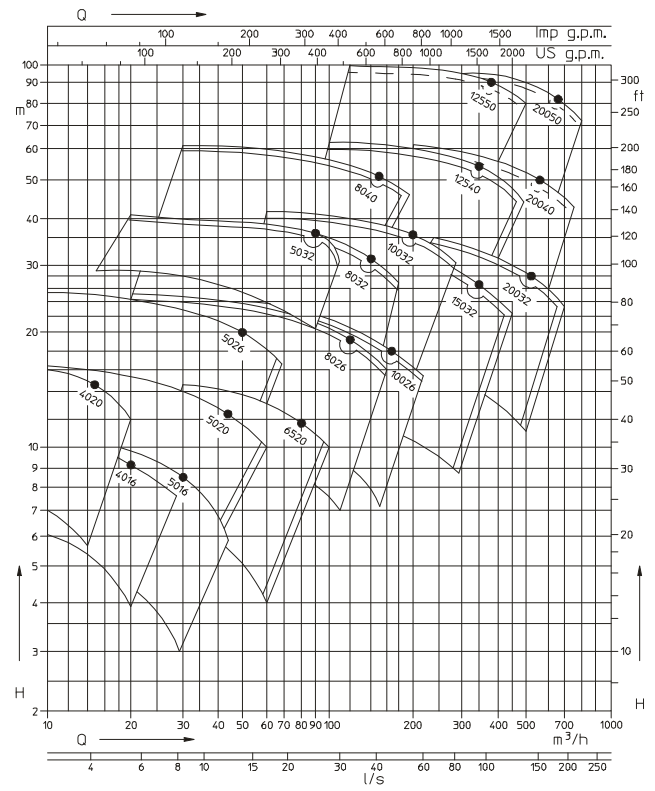


2900 rpm

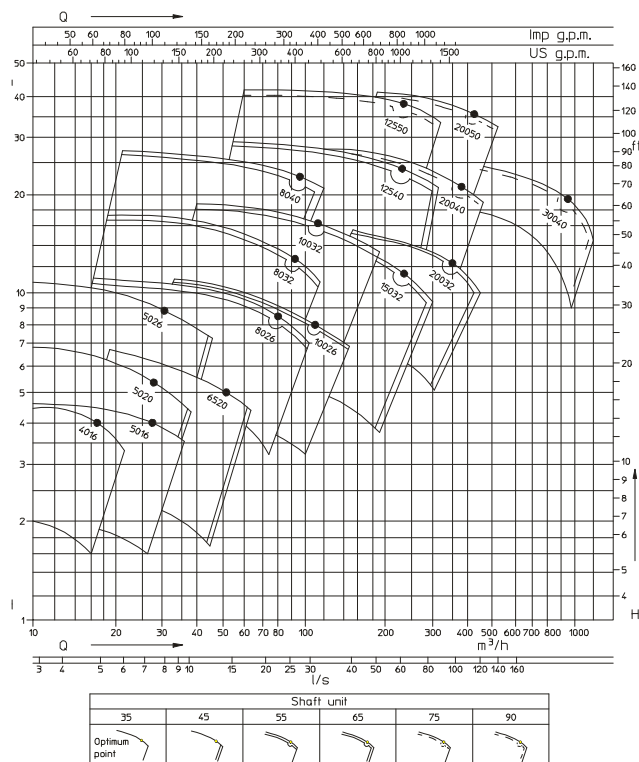
## Pumps with channel impeller, double (Z) respectively triple (D)



2900 rpm

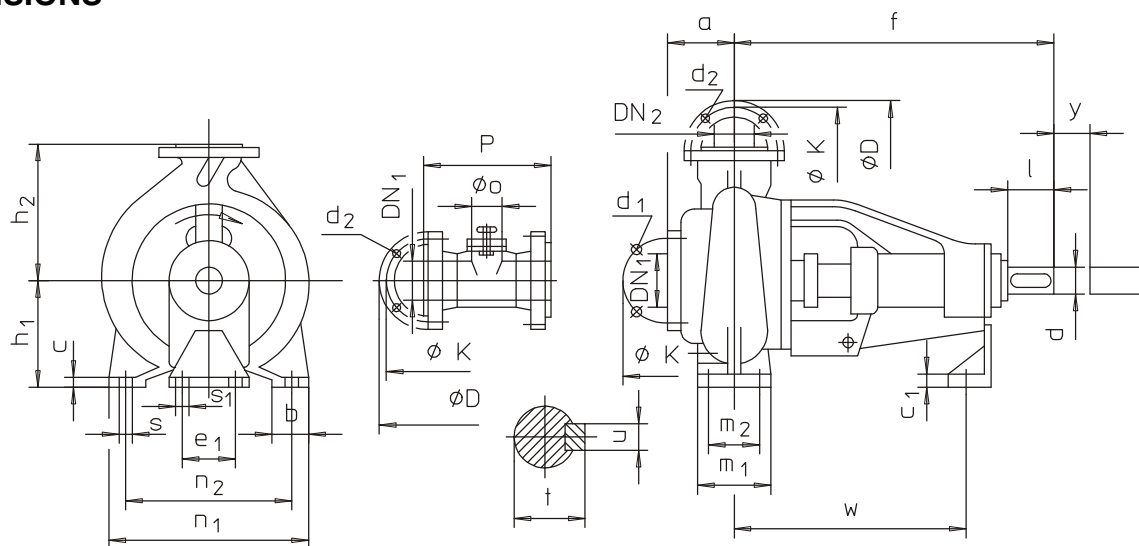


1450 rpm



960 rpm

## DIMENSIONS



Dimensions in mm

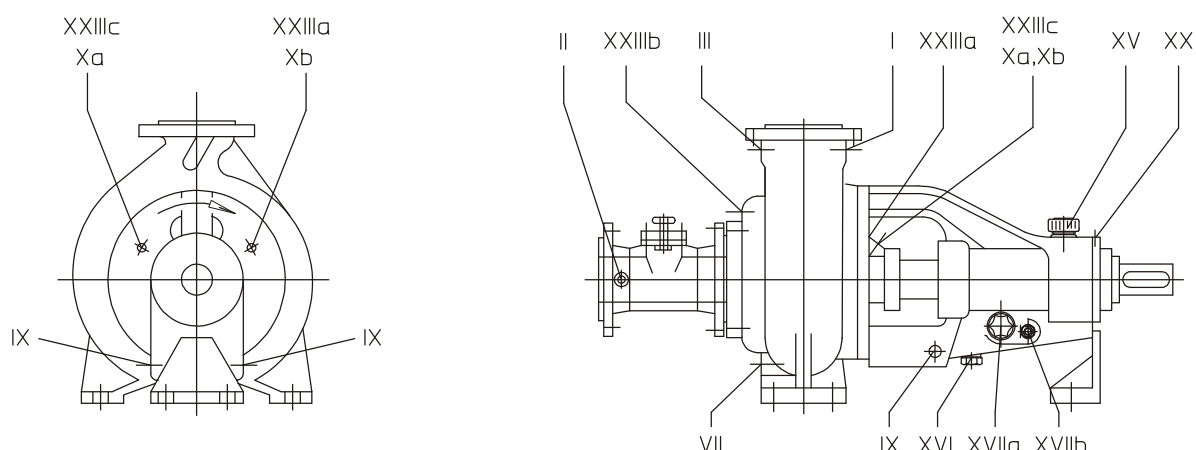
Size	Bearing	Pumps dimensions						Foot dimensions											Shaft end				Spa	1)				
		DN2	DN1	a	f	h1	h2	b	c	c1	e1	m1	m2	n1	n2	s	s1	w	d	l	t	u	y	o	P			
3216	35	32	50	80	425	132	160	50	14	6	110	100	70	240	190	14	15	315	28	60	31	8	140	-	-			
3220					420	160	180										13	310										
4016	35	40	50	90	405	160	180							295	15		370	38								80	41	10
4020					410	200	300							295														
5016	35	50	65	100	405	160	200	65	8	125	95	320	250	15	13	370	38	80	41	10	80	200						
5020	112			500	180																							
5026	45			125	200	250																						
5032	55			140	550	225	280																					
6520	45	65	80	125	500	180	225	6	160	120	435	355	18	18	500	55	110	59	16	125	250							
8026	55	80	130	550	225	280	12	140																				
8032			125	250	315																							
8040	65	100	125	140	670	280	355	80														18		15	110	400	315	14
10026	550				225	280																						
10032	250				315																							
12540	65				125	150	170		670	315	400	100	22	15	140	200	150	22	18	500	55		59					
12550	75	720	355	450				65	140	69	18										180	150	280					
15032	65	150	670	280	400	500	400	55	110	59	16																	
20032			315	450	55	140	69	18																				
20040	75	200	200	200	720	355	500	24	15	600	500	22	18	500	65	140	69	18	300									
20050					400	530																						
30040	Dimensions on request																											

Dimensions on request

Dimensions connections flanges according to DIN 2501 PN - 10									
DN1/DN2	32	40	50	65	80	100	125	150	200
$\phi D$	140	150	165	185	200	220	250	285	340
$\phi k$	100	110	125	145	160	180	210	240	295
d1 x number	-	- ) 18 x 4	M 16 x 4 ) 18 x 4	M 16 x 4	M 16 x 8	M 16 x 8	M 16 x 8	M 20 x 8	M 20 x 8
d2 x number	18 x 4	18 x 4	18 x 4	18 x 4	18 x 8	18 x 8	18 x 8	22 x 8	22 x 8

\*) Only for sizes 32...

## TABLE OF CONNECTIONS



Code	Connections	For version with	
		Grease	Oil
I	Pressure gauge connection		
II	Pressure/vacuum gauge connection		
III	Vent		
VII	Drain		
IX	Drip and leakage connection		
Xa	Inlet connection for sealing liquid	External sealing	
Xb	Outlet connection for sealing liquid	External sealing	
XV	Oil filling		X
XVI	Oil drain		X
XVIIa	Oil level sight glass		X
XVIIb	Constant level oiler connection		X
XX	Grease nipple	X	
XXIIIa	Flushing liquid connexion for shaft seal	Flushing before packing	
XXIIIb	Flushing liquid connexion for wear plate	Flushing of wear plate	
XXIIIc	Seal flushing	External sealing	

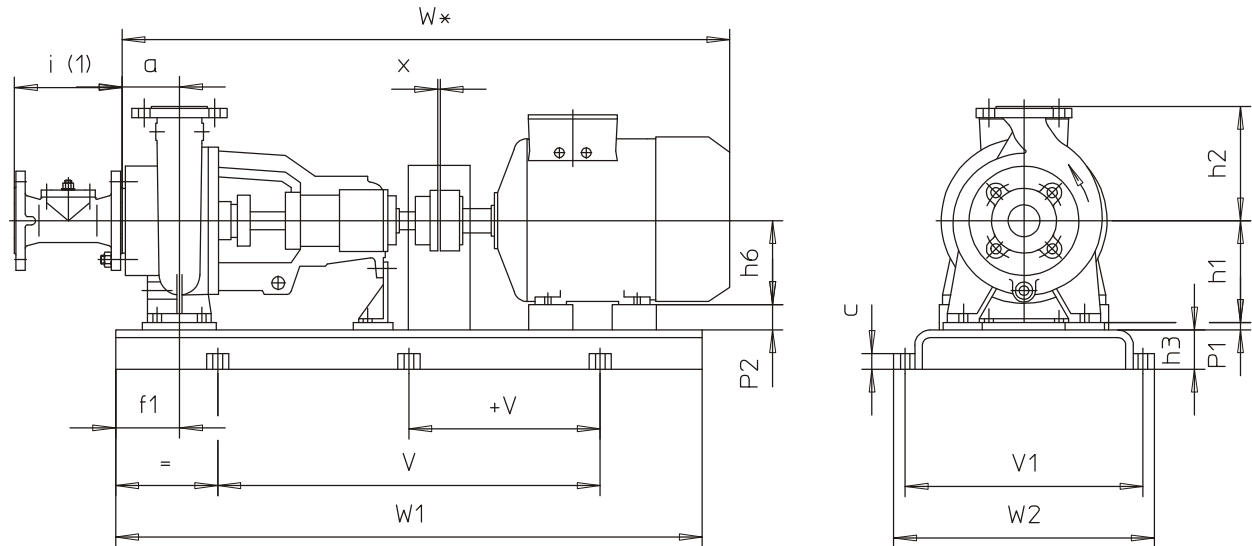
### Dimensions of connections

Code	Pumps with shaft unit										90
	35		45		55		65		75		
	Standard type	Special type	Standard type	Special type	Standard type	Special type	Standard type	Special type	Standard type	Special type	
I	G 1/2" <sup>(4)</sup>		G 1/2"		G 1/2"		G 1/2"		G 1/2"		
II	Without hole	G 1/2"	Without hole	G 1/2"	Without hole	G 1/2"	Without hole	G 1/2"	Without hole	G 1/2"	
III	G 1/2" <sup>(5)</sup>		G 1/2"		G 3/4"		G 1" <sup>(3)</sup>		G 1"		
VII	G 1/2" <sup>(6)</sup>		G 1/2" <sup>(1)</sup>		G 1" <sup>(2)</sup>		G 1" <sup>(3)</sup>		G 1"		
IX	G 1/2"		G 1/2"		G 1/2"		G 3/4"		G 3/4"		
Xa	G 1/4"		G 1/4"		G 1/4"		G 3/8"		G 3/8"		
Xb	G 1/4"		G 1/4"		G 1/4"		G 3/8"		G 3/8"		
XV	Ø 20		Ø 20		Ø 20		Ø 20		Ø 20		
XVI	G 1/4"		G 1/4"		G 1/4"		G 1/4"		G 1/4"		
XVIIa	G 3/4"		G 3/4"		G 3/4"		G 3/4"		G 1"		
XVIIb	G 1/4"		G 1/4"		G 1/4"		G 1/4"		G 1/4"		
XX	M6		M6		M6		M6		M6		
XXIIIa	G 1/4"		G 1/4"		G 1/4"		G 3/8"		G 3/8"		
XXIIIb	G 1/2"		G 1/2"		G 1/2"		G 1/2"		G 1/2"		
XXIIIc	G 3/8"		G 1/2"		G 1/2"		G 1/2"		G 1/2"		

On request

- 1) G 3/4" in 6520
- 2) G 3/4" in 5032, 8026 and 8032
- 3) G 3/4" in 8040
- 4) G 1/4" in 3216 and 3220
- 5) Pumps 3216, 3220 not drilled
- 6) G 1/4" in 3216 and 3220

## Foundation Plan



**n=2900 rpm**

Dimensions in mm. general tolerances (bedplates) for cast parts to DIN 1686/GB 17, for welded parts to DIN 8570 B

Pump size	Motor		Base-plate	Coupling	Pump-motor references										Base-plate references										Bolts	Weight set
	Size	kW.			a	i (2)	h1	h2	h6	f1	W *	W1	V	+V	V1	W2	h3	P1	P2	c	x					
3216	90 S	1,5	S 272	B-68	80	—	132	160	90	80	841	820	540	—	320	360	65	—	42	25	4	M16x250	88			
	90 L	2,2	S 017	B-80					100	180	882	1100	700		325	361	60		32			M12x150	91			
	100 L	3							112	—	903	—	—		—	—	20		M12x150			104				
	112 M	4	S 303	B-95					132	80	963	920	600		350	390	65		—			M16x250	125			
	132 S	5,5 7,5	S 017	B-80			100	112	877 898	1100	700	325	361		60	60 48	M12x150		111							
112 M	4	S 303					B-95	132	80	958	920	600	350		390	65	28		M16x250			142				
160 M	11 15	S 344	160	1092				1020		660	400	450	80		—	30	M20x400		171							
3220	100 L	3	S 017	B-80			180	100	112	877 898	1100	700	325		361	60	60 48		25			M16x250	132			
	112 M	4			S 303	132		80	958	920	600	350	390	65	28	142										
	132 S	5,5 7,5	S 344	160	1092	1020			660	400	450	80	—	30	M20x400	184										
	160 M	11 15		160	1092	1020		660	400	450	80	—	30	M20x400	184											
4016	100 L	3	S 272	B-80	90	—	160	180	100	70	872 893	820	540	—	320	360	65	60 48	25	M16x250	99					
	112 M	4	S 303	B-95					132	90	953	920	600		350	390		65			28	106				
	132 S	5,5 7,5	S 344						160		1087	1020	660		400	450		80			—	30	M20x400	126		
	160 M	11 15	160	1087					1020	660	400	450	80		—	30		M20x400			136					
4020	90 L	2,2	S 272	B-68 B-80			160	200	180	90	100	831	820		540	—	320	360	65	—	70 60 48	25	M16x250	102		
	100 L	3								112	70	872 893	820		540		350	390			65			28	109	
	112 M	4	S 303	B-95						132	90	953	920		600		350	390			65			28	116	
	132 S	5,5 7,5	S 344							160		1087	1020		660		400	450			80			—	30	M20x400
	160 M	11 15	160	1087	1020	660				400	450	80	—	30	M20x400		175									
	160 L	18,5	160	1087	1020	660				400	450	80	—	30	M20x400		188									
5016	112 M	4	S 303	B-80	100	200	160	180	112	130	903	920	600	—	350	390	65	48 28	25	M16x250	205					
	132 S	5,5 7,5							S 344	B-95	132	90	963		920	600	400	450			80	—	30	M20x400	117	
	160 M	11 15	160	1097							1020		660		400	450	80	—			30	M20x400	141			
	160 L	18,5	160	1097					1020	660	400	450	80		—	30	M20x400	170								
5020	112 M	4	S 303	B-80			112	200	180	250	112	65	1010		920	600	—	350	390	65	68	25	M16x250	183		
	132 S	5,5 7,5	S 344	B-95							132	100	1070		1020	660		400	450	80	48	200				
	160 M	11 15									S 385		B-110		160	180		1204	1140	740	440	490	20	219		
	160 L	18,5	180	1328								—			—			—	—	—	20	236				
	180 M	22	200	125	1386	1270					840	490	540	80	20	—		30	250							
	200 L	30	S 436	B-125	200	125					1386	1270	840	490	540	80		20	—	30	315					
5026	160 M	11 15	S 385	B-95	125	200	250	160	90	1217	1140	740	—	440	490	100	25 50	40	M20x400	227						
	160 L	18,5						180	1341	—	—	—		—	—					—	—	—	20	240		
	180 M	22	S 436	B-125				200	125	1399	1270	840		490	540					—	—	336				
	200 L	30 37						225	110	1406	1250	550		610	100					25 50	359					
	225 M	45	S 486	250				140	1559	1400	940	550		610	100					25 50	398					
	250 M	55	S 607	B-140				250	140	1559	1400	940		550	610					100	25 50	635				



## Foundation Plan

n=2900 rpm

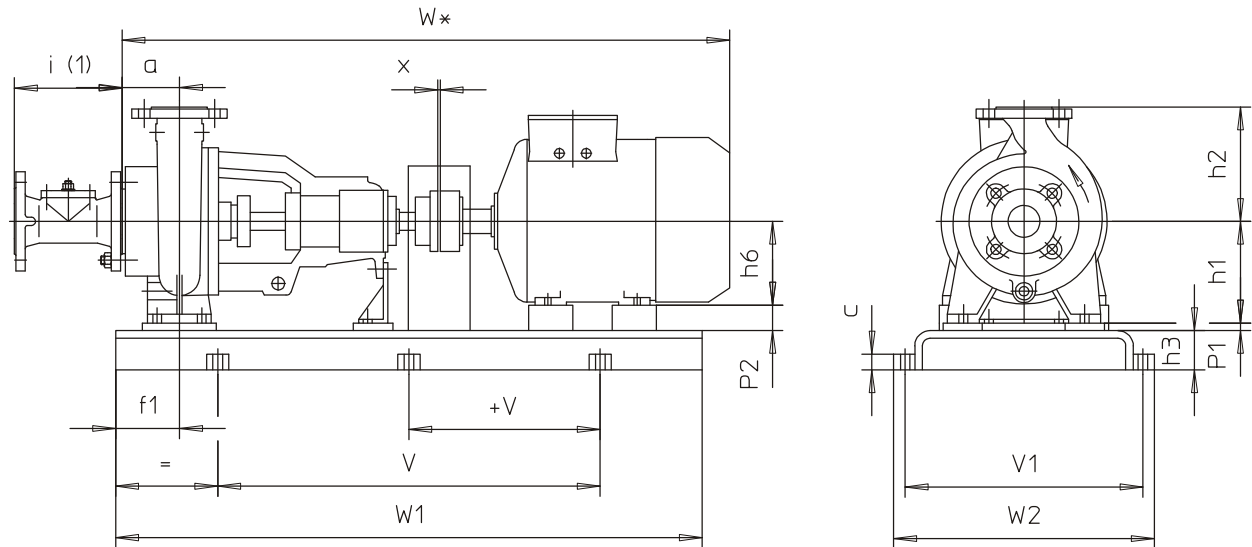
Dimensions in mm.;general tolerances (bedplates) for cast parts to DIN 1686/GTB 17,for welded parts to DIN 8570 B

Pump size	Motor		Base-plate	Cou-pling	Pump-motor references							Base-plate references											Bolts	Weight set											
	Size	kW.			a	i (2)	h1	h2	h6	f1	W *	W1	V	+V	V1	W2	h3	P1	P2	c	x														
6520	132 S	7,5	S 385	B-95	125	200	180	225	132	155	1083	1140	740	—	440	490	80	—	48	20	30	4	M20x400	194											
	160 M	11		160					90	1217	1270								840					490	540	20	—	45	40	213					
	160 L	15																												200	125	1399	1250	940	550
	180 M	22	S 436	B-110					180			1341	1400		710	700	750	140		85															
	200 L	30		B-125					225	110	1406	1420							940					670	730	25	—	40	257						
	225 M	45							225	110	1406																		1250	940	670	730	25	—	40
180 M	22	S 486	B-110		130	250	225	280	180	130	1396		1420	940	—	550	610	100		—	25	35	4						M24x400	316					
200 L	30	S 487	B-125	200					185	1454	1400	710							700					750	140	85	30	20		388					
225 M	45			225					175	1461																				1420	940	670	730	25	—
250 M	55			S 607					B-140	250			120	1614		1400	1420	940		670	730	25													
280 S	75	180x75x14	B-160	280						1689	1800	1420	710	700		750			140					85	30	20	657								
280 M	90			280						1689	1800	1420	710	700		750			140					85	30	20	887								
315 S	110			190x82x14					315	185	1794	1900	1520	760	770	820	120	120	25	35	1127														
8026	200 L	30	S 487	B-125					140	250	225	280	200		1464	1420	940	—	550	610	100	—		25	35	4	M24x400	403							
	225 M	45			225	175	1471	1420					940	670	730													25		—	40	426			
	250 M	55			S 607	B-140	250																									120	1624	1400	1420
	280 S	75	180x75x14	B-160	280	185	1699									1800	1420		710	700	750	140	85	30	20				672						
	280 M	90			280	185	1699	1800					1420	710	700	750	140		85	30	20	902													
	315 S	110			190x82x14	315		1804					1900	1520	760	770	820		120	120	25	35	1142	942											
10026	200 L	30	S 487	B-125	140	250	225	280	225	175	1471	1420	940	—	550	610	100	—	25	35	4	M16x250	902												
	225 M	45							250	120	1624												1400	1420	940	670	730	25	—	40	942				
	250 M	55							S 607	B-140	280												185								1699	1800	1420	710	700
	280 S	75	180x75x14	B-160					315		1804	1900	1520		760	770	820	140	85	30			20								902				
	280 M	90							315		1804	1900	1520		760	770	820	140	85	30			20	942											
	315 S	110							190x82x14	315		1804	1900		1520	760	770	820	140	85			30	20	1142	942									

Dimensions for motor with enclosure IP-55 , make of motor to our choice

(1) Intermediate piece optional

## Foundation Plan



**n=1450 rpm**

Dimensions in mm.,general tolerances (bedplates) for cast parts to DIN 1686/GTB 17,for welded parts to DIN 8570 B

Pump size	Motor		Base-plate	Coupling	Pump-motor references							Base-plate references										Bolts	Weight set													
	Size	kW.			a	i (2)	h1	h2	h6	f1	W *	W1	V	+V	V1	W2	h3	P1	P2	c	x															
3216	71	0,25	S 272	B-68	80	—	132	160	71	115	749	820	540	—	320	360	65	—	61	25	M16x250	79														
		0,37							80	95	783								52			80	87													
	0,55	90 S							1,1	80	80								841			42	90	84	90											
	0,75								1,5	90	80								841			80	89													
	3220	80							0,55	B-80	90								160			180	80	95	778	820	540	—	320	360	65	—	80	4	89	
0,75									90 S														1,1	90	80								836		70	91
90 L		1,5							100 L														2,2	100	70								877		60	105
3		80							95														773	80	106											
4016	80	0,55		B-80	90	160	180	80	95			773	820	540	—	320	360	65		—			80	4	104											
		0,75						90 S	1,1			90											80		831								70		109	
	90 L	1,5						100 L	2,2			100											80		872								89		92	
	3	1,5						100 L	2,2			80											95		773								80		96	
4020	71	0,37						B-80	90	160	180	71							130			739	820		540	—	320	360	65	—	80	4	99			
		0,55										90 S							1,1			90									80		831	70	102	
	0,75	90 L										1,5							100 L			2,2									100		80	872	60	110
	3	1,5										100 L							2,2			80									95		773	80	112	
5016	80	0,55	S 303	B-80	100	200	200					80	165	783	920	600	—	350	390	80	—	80		4							95					
		0,75										90 S	1,1	90								135									841		70	100		
	90 L	1,5										100 L	2,2	100								115									882		60	103		
	3	1,5										90 S	1,1	90								100									948		80	118		
	90 L	1,5						100 L	2,2	100	80	989	68	136																						
5020	90 S	1,1						B-80	112	180	200	90	100	948								920	600		—	350	390	80	—	90	4	121				
		1,5										100 L	2,2	100																80		989	80	129		
	3	112 M										4	112	70																1010		68	136			
	132 S	5,5		132	115	1070	1020					660	400	450	48	161																				
5026	100 L	2,2		S 344	B-95	125	200					250	100	190	1002	1140	740	—	440	490	80			—						100		30	178			
		3											112 M	4	112															180			1023	88	180	
	5,5	132 S											5,5	132	150															1083			68	200		
	7,5	132 M	7,5										132	140	1148															93			211			
5032	112 M	4	S 435		B-110	140	225	280	112	160	1088	1270	840	—	490	540	80	—	113	30	237															
		5,5							132 S	5,5	132								140		1148	93	251													
	7,5	132 M							7,5	132	140								1148		93	262														
	160 M	11							160 L	15	160								130		1282	65	289													
	180 M	18,5			180 L	22	180	120	1406	45	306																									
	180 L	22			200 L	30	200	1464	25	325																										
	200 L	30			200	1464	25	385																												

Dimensions for motor with enclosure IP-55 , make of motor to our choice

(1) Intermediate piece optional

# Foundation Plan

n=1450 rpm

Dimensions in mm..general tolerances (bedplates) for cast parts to DIN 1686/GTB 17.for welded parts to DIN 8570 B

Pump size	Motor		Base-plate	Cou-pling	Pump-motor references							Base-plate references										Bolts	Weight set																				
	Size	kW.			a	i (2)	h1	h2	h6	f1	W *	W1	V	+V	V1	W2	h3	P1	P2	c	x																						
6520	90 L	1,5	S 385	B-80	125	200	180	225	90	215	961	1140	740		440	490	80		90	30		M20x400	156																				
	100 L	2,2							100	180	1002								80				164																				
	112 M	3							112		1023								68				166																				
	132 S	5,5		132					150	1083	48								186																								
	132 M	7,5		B-95																								197															
8026	100 L	3	S 486	B-110	130		225	280	100	225	1057	1250	840		550	610			125	40	4	M24x400	227																				
	112 M	4							112	215	1078								113				232																				
	132 S	5,5							132	180	1138								93				244																				
	132 M	7,5							160	140	1272								65				257																				
	160 M	11							180		1396								45				277																				
	160 L	15																					294																				
	180 M	18,5							132	180	1133								118				313																				
132 S	5,5	125							250	315	160								140				1267	90	320																		
132 M	7,5										180												1391	70	337																		
160 M	11																								356																		
160 L	15						392																																				
180 M	18,5						436																																				
180 L	22		B-125															455																									
200 L	30		S 487	250	280	355	200	180			1449	1420	940							472																							
160 M	11	225					140	1621	55	594																																	
160 L	15	112					220	1088	113	247																																	
180 M	18,5	132					190	1148	93	261																																	
225 S	37	160					130	1282	65	272																																	
8040	225 M	45	S 538	B-140	140		225	280	180	110	1406	1250	840		550	610	100		120	35			4	M24x400	292																		
	160 M	11							132	190	1148								90						309																		
	160 L	15							160	110	1406								70						328																		
	180 M	18,5							200	140	1464								50						342																		
	200 L	30							225	150	1501								25						352																		
	225 S	37							180	130	1556								135		388																						
	225 M	45							200		1614								115		432																						
10026	112 M	4							S 486	B-110	140										225	280			225	150	1774	1600	1060		670	730	140	30	135	40	4	M24x400	505				
	132 S	5,5																							280	220	1849								65				519				
	132 M	7,5																							200		1664												580				
	160 M	11	225	150	1701	105	626																																				
	160 L	15	250	130	1824	90	646																																				
	180 M	18,5					664																																				
	180 L	22					846																																				
10032	132 M	7,5	S 607	B-125			315	400				280	220	1849	1950	1570	785	700		750					140	30	65								20				4	M16x250	1093		
	160 M	11										200		1664																											1143		
	160 L	15										225	150	1701													155														723		
	180 M	18,5							250	130	1824	105	768																														
	180 L	22											788																														
	200 L	30											988																														
	225 S	37											1232																														
12540	180 M	18,5							S 608	B-140			315	400					280			1899					2000	1580	790	700	750	140	30	115		20					4	M16x250	1282
	180 L	22																	200			1664																					1479
	200 L	30																	225		150	1701	105	1559																			
	225 S	37	250	130	1824	90	1715																																				
	225 M	45					1855																																				
	225 M	55					410																																				
	280 S	75					443																																				
12550	280 M	90	S 608	B-180	170	280	355	450							280		1899	2000	1580	790	700	750	140	30	115	20	4	M24x400	460														
	315 S	110													200		1664												479														
	315 M	132													225	150	1701								105				493														
	160 L	15							250	130	1824	90	554																														
	180 L	22											600																														
	200 L	30											620																														
	225 S	37											620																														
15032	225 M	45							S 606	B-125			280	400	132		1298	1250	840		670	730	100		148				40	4	M24x400	443											
	160 M	11													160	130	1432								1400							940		120									
	160 L	15													180		1556																	80									
	180 M	18,5	200	200	1614	1600	1060								55																												
	180 L	22	225	180	1651										620																												
	200 L	30	B-140																																								
	225 S	37	S 608	B-140																																							
225 M	45																																										

## Foundation Plan

n=1450 rpm

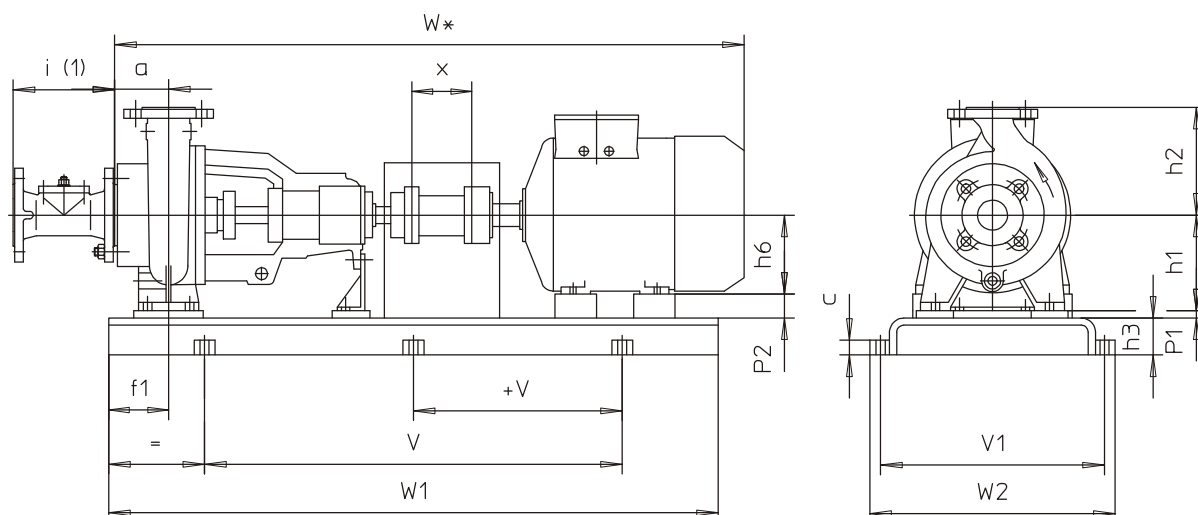
Dimensions in mm.,general tolerances (bedplates) for cast parts to DIN 1686/GTB 17,for welded parts to DIN 8570 B

Pump size	Motor		Base-plate	Cou-pling	Pump-motor references							Base-plate references										Bolts	Weight set																		
	Size	kw.			a	i (2)	h1	h2	h6	f1	W *	W1	V	+V	V1	W2	h3	P1	P2	c	x																				
20032	160 L	15	S 607	B-125	200	300	315	450	160		1462	1400	940	—	670	730	100	—	155	40	4	M24x400	483																		
	180 M	18,5								130	1586								135				502																		
	180 L	22							180										115				516																		
	200 L	30	S 608	B-140					200	200	1644								90				577																		
	225 S	37							225	180	1681	1600	1060						65	20			623																		
	225 M	45							250	130	1804								155				643																		
	250 M	55							280	260	1879	2000	1580	790	700	750	140	30	175				845																		
	280 S	75	200x75x14	B-180					180	130	1636								155				1091																		
20040	180 L	22	S 608	B-160			355	500	200	200	1694	1600	1060	—	670	730	100	—	175	40		M24x400	635																		
	200 L	30							200	200	1694								155				679																		
	225 S	37							225	160	1731	1600	1060						130				724																		
	225 M	45							250	130	1854								105				744																		
	250 M	55							280		1929	2050	1630	815	700	750	140	30	180			M16x250	944																		
	280 S	75	205x75x14	B-180					260		2064								150				1191																		
	315 S	110	220x82x14	B-200					315		2064	2200	1740	870	770	820			70				1241																		
	315 M	132							250	2204	2300								180				1437																		
	315 L	160							230x82x14	B-200					250	2204			2300				150	1671																	
	20050	250 M	55	205x80x14					B-160	400	530	280		1929	2050	1630			815				750	800			180	1098													
280 S		75	220x82x14	B-180			260		2064			150	1277																												
280 M		90		B-200					315				2064	2200	1740	870			770				820			115	1327														
315 S		110	230x82x14						250			2204	2300													115	1523														
315 M		132							250			2204	2300	1840	920											115	1603														
315 L		160							250			2204	2300													1840	920						115	1757							
		200																																	1897						

Dimensions for motor with enclosure IP-55 , make of motor to our choice

(1) Intermediate piece optional

### Foundation Plan for units with spacer type coupling



n=2900 rpm

Dimensions in mm., general tolerances (bedplates) for cast parts to DIN 1686/GB 17, for welded parts to DIN 8570 B

Pump size	Motor		Base-plate	Coupling	Pump-motor references							Base-plate references										Bolts	Weight set																	
	Size	kW.			a	i (2)	h1	h2	h6	f1	W *	W1	V	+V	V1	W2	h3	P1	P2	c	x																			
3216	90 S	1,5	S 017	H-80	80	—	132	160	90	110	977	1100	700	—	325	361	60	—	42	25	140	M12x150	95																	
	90 L	2,2							100	1018	32								105																					
	100 L	3							1010	1039	20								112																					
	112 M	4							112																															
132 S	5,5 7,5	S 344	H-95	132			80	1099	1020	660	400	450	80		—	30	M20x400		135 145																					
3220	100 L	3	S 017	H-80			90	160	180	100	110	1013	1100		700	—	325		361	60		—	60	25	140	M12x150	112													
	112 M	4								1012	1034	48											119																	
	132 S	5,5 7,5								S 344	H-95	132											80				1094	1020	660	400	450	80	28	30	M20x400	142 152 190				
	160 M	11 15			S 385	160					1228	1140		740				440			490						—				203									
4016	100 L	3	S 017	H-80	90	160				180	100	125	1008	1100	700		—	325	361	60	—		60	25		140	M12x150	105												
	112 M	4									1012	1029	48										112																	
	132 S	5,5 7,5									S 344	H-95	132															1089	1020	660	400	450	80	28	30	M20x400	137 147 183 196			
	160 M	11 15									S 385	160	75										1223					1140	740	440	490		—							
4020	90 L	2,2	S 017	H-80			90	160	180		90	125	967	1100	700	—		325	361	60		—	70	25	140		M12x150	108												
	100 L	3									100	1008	60										115																	
	112 M	4									1012	1029	48										122																	
	132 S	5,5 7,5									S 344	H-95	132															1089	1020	660	400	450	80	28			146 156 193 206 223			
5016	160 M	11 15	S 385	H-95	100	160				200	160	75	1223	1140	740		—	440	490	80	—		—	30		140	M20x400	206 223 128 142 152 189 202 219												
	112 M	4	S 344								112	110	1039										1020					660	400	450		48	28							
	132 S	5,5 7,5	S 385								132		1099																400	450		28								
	160 M	11 15	S 385								160	75	1233																			—								
5020	160 L	18,5	S 436	H-110			112	180	200		112	125	1146	1270	840	—		440	490	80		—	68	35	140		M24x400	165 178 188 220 233 250 265												
	112 M	4									S 385	132											1206										48							
	132 S	5,5 7,5									S 436	160	90										1340							490	540		20							
	160 M	11 15									S 436	180											1464							550	610	100	20	—						
5026	200 L	30	S 487	H-125	125	200				250	200	130	1522	1420	940		—	550	610	100	—		25	35		140	M24x400	348												
	160 M	11 15	S 436	H-95							160	90	1353										1270					840	490	540	80	40	30	M20x400	241 254 271 286					
	160 L	18,5	S 436	180								1477																			20									
	180 M	22	S 487	200							130	1535	1420																											
5026	200 L	30	S 487	H-125			125	200	250		200	130	1535	1420	940	—		550	610	100		—	25	35	140		M24x400	369 392 421												
	225 M	45									S 487	225	125										1542																	
	250 M	55									S 608	H-140	250										160					1695	1600	1060	670	730		50						657

Dimensions for motor with enclosure IP-55 , make of motor to our choice

(1) Intermediate piece optional

## Foundation Plan for units with spacer type coupling

n=2900 rpm

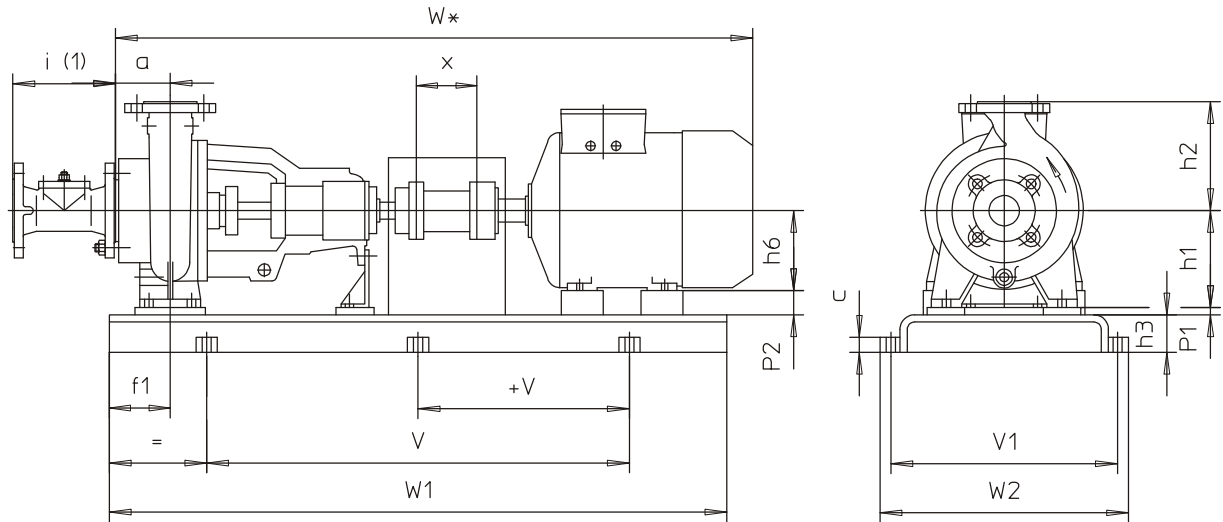
Dimensions in mm.;general tolerances (bedplates) for cast parts to DIN 1686/GTB 17,for welded parts to DIN 8570 B

Pump size	Motor		Base-plate	Cou-pling	Pump-motor references							Base-plate references										Bolts	Weight set											
	Size	kW.			a	i (2)	h1	h2	h6	f1	W *	W1	V	+V	V1	W2	h3	P1	P2	c	x													
6520	132 S	7,5	S 385	H-95	125	200	180	225	132	115	1219	1140	740	—	440	490	80	—	48	20	30	140	M20x400	195										
	160 M	11	S 436						160	90	1353	1270	840		490	540			20					40										
	160 L	18,5							180	1477																								
	180 M	22	S 487	H-110					200	135	1535	1420	940		550	610	100	20	—	45	35			M24x400	355									
	200 L	30		H-125					225	125	1542														272									
	225 M	45		180					150	1532	355																							
225 M	45	200		105	1590	391																												
8026	180 M	22	S 487	H-110	130	250	225	280	225	1597	1600	1060	785	700	750	140	85	30	20	140	M16x250	947												
	200 L	30		H-125					280	185												1825	1950	1570	770	820	25	40						
	225 M	45		250					155	1750												2050	1630	815	770	820			25	40				
	250 M	55	S 608	H-140					280	185												1825	1950	1570	785	700	750	140			85	30	20	M24x400
	280 S	75	195x75x14	H-160					200	105												1600	1420	940	—	550	610	100	—	25	35	M16x250	962	
	280 M	90	205x82x14						225	1607													429											
10026	315 S	110	205x82x14	H-160	140	250	225	280	225	1607	1600	1060	785	700	750	140	85	30	20	140	M16x250	962												
	200 L	30	S 487	H-125					250	155												1760	1600	1060	670	730	25	40						
	225 M	45							280	185												1835	1950	1570					785	700	750	140	85	30
	250 M	55	S 608	H-140					315	1940												2050	1630	815	770	820	120	40						
	280 S	75	195x75x14	H-160					200	105												1600	1420	940	—	25			35	M16x250	1150			
	280 M	90	205x82x14						225	1607													429											

Dimensions for motor with enclosure IP-55 , make of motor to our choice

(1) Intermediate piece optional

## Foundation Plan for units with spacer type coupling



**n=1450 rpm**

Dimensions in mm., general tolerances (bedplates) for cast parts to DIN 1686/GB 17, for welded parts to DIN 8570 B

Pump size	Motor		Base-plate	Coupling	Pump-motor references							Base-plate references										Bolts	Weight set																																														
	Size	kW.			a	i (2)	h1	h2	h6	f1	W *	W1	V	+V	V1	W2	h3	P1	P2	c	x																																																
3216	71	0,25	S 015	H-80	80	—	132	160	71	80	885	920	600	—	325	361	50	—	61	25	140	M12x150	79																																														
		0,37							919		52								80																																																		
	0,55	977									42								82																																																		
	0,75								914	80	84																																																										
	90 S	1,1								700	90								87																																																		
90 L	1,5	70					90																																																														
3220	80	0,55					180	80			80	914	1100				700		80				89																																														
		0,75																	972				70	91																																													
	90 S	1,1							100														125	1013	60	80	94																																										
90 L	1,5	80					97																																																														
4016	80	0,55	S 015		90	160	200	—	80	90	909	920	600				325		361				60	50	70	80	85																																										
		0,75							909	80	91																																																										
	90 S	1,1								1008	1100																	700	60	100	88																																						
	90 L	1,5																														90	967	90	91																																		
100 L	2,2	100	140						1008																							1100	700	60	100	107																																	
4020	71	0,37	S 015				100	200	200	180	71	100	875				920		600				—	350	390	65	80	70	83																																								
		0,55									909	80	95																																																								
	0,75	967										1008	1100																	700	60	89	93																																				
	90 S																																	1,1	90	967	70	98																															
	90 L										1,5																							100	140	1008	1100	700	60	100	101																												
5016	80	0,55	S 303	H-95	112	200			250	100	115	1125	1020				660		—	400		450	80	30	80	140	M16x250	117																																									
		0,75																										919	80	96																																							
	90 S	1,1																											1084	100	1018	60	70	104	122																																		
	90 L	1,5																																		90	977	90	124																														
	100 L	2,2																										100								100	1018	60	104	122																													
5020	80	0,55	S 344				125	200		250	280	112	120				1206	1140										740	440	490	80	100	88	201																																			
		0,75																																	1084	1125	1146	1206	1138	1159	1224	1270	840	550	610	100	65	35	321																				
	90 S	1,1																																																1084	1125	1146	1206	1138	1159	1224	1270	840	550	610	100	65	35	321					
	90 L	1,5																																																															90	1084	100	1018	60
	100 L	2,2																																	100	100	1018	60	70	104	122																												
5026	100 L	2,2	S 385									H-110	140				225	280										125	130	1542	1420	940	490	540	100	65	45	25	M24x400	338																													
		3																																						1138	1159	1224	1270	840	550	610	100	65	45	25	321																		
	112 M	4																																																		1125	1146	1206	1138	1159	1224	1270	840	550	610	100	65	45	25	321			
	132 S	5,5																																																																	1125	1146	1206
	132 M	7,5																																						1125	1146	1206	1138	1159	1224	1270	840	550	610	100	65																		
160 M	11	1125	1146	1206	1138	1159			1224										1270	840		550	610	100	65	45	25	321																																									
160 L	15																												1125	1146	1206	1138	1159	1224	1270	840	550	610	100													65	45	25	321														
180 M	18,5																																							1125	1146	1206	1138	1159	1224	1270	840	550	610	100	65					45	25	321											
180 L	22	1125	1146	1206	1138	1159			1224										1270	840		550	610	100	65	45	25	321																																									
200 L	30																												1125	1146	1206	1138	1159	1224	1270	840	550	610	100													65	45	25	321														
200 L	30						1125	1146		1206	1138																													1159	1224	1270	840	550	610	100	65	45	25	321																			
200 L	30	1125	1146	1206	1138	1159			1224										1270	840		550	610	100	65	45	25	321																																									
200 L	30																												1125	1146	1206	1138	1159	1224	1270	840	550	610	100												65	45	25	321															
200 L	30						1125	1146		1206	1138																													1159	1224	1270	840	550	610	100	65	45	25	321																			
200 L	30	1125	1146	1206	1138	1159			1224										1270	840		550	610	100	65	45	25	321																																									
200 L	30											1125	1146	1206	1138	1159	1224	1270			840								550	610	100	65	45	25	321																																		
200 L	30						1125	1146		1206	1138																									1159	1224	1270	840	550	610	100	65	45	25	321																							
200 L	30	1125	1146	1206	1138	1159			1224										1270	840		550	610	100	65	45	25	321																																									
200 L	30											1125	1146	1206	1138	1159	1224	1270			840								550	610	100	65	45	25	321																																		
200 L	30						1125	1146		1206	1138																									1159	1224	1270	840	550	610	100	65	45	25	321																							
200 L	30	1125	1146	1206	1138	1159			1224										1270	840		550	610	100	65	45	25	321																																									
200 L	30											1125	1146	1206	1138	1159	1224	1270			840								550	610	100	65	45	25	321																																		
200 L	30						1125	1146		1206	1138																									1159	1224	1270	840	550	610	100	65	45	25	321																							
200 L	30	1125	1146	1206	1138	1159			1224										1270	840		550	610	100	65	45	25	321																																									
200 L	30											1125	1146	1206	1138	1159	1224	1270			840								550	610	100	65	45	25	321																																		
200 L	30						1125	1146		1206	1138																									1159	1224	1270	840	550	610	100	65	45	25	321																							
200 L	30	1125	1146	1206	1138	1159			1224										1270	840		550	610	100	65	45	25	321																																									
200 L	30											1125	1146	1206	1138	1159	1224	1270			840								550	610	100	65	45	25	321																																		
200 L	30						1125	1146		1206	1138																									1159	1224	1270	840	550	610	100	65	45	25	321																							
200 L	30	1125	1146	1206	1138	1159			1224										1270	840		550	610	100	65	45	25	321																																									
200 L	30											1125	1146	1206	1138	1159	1224	1270			840								550	610	100	65	45	25	321																																		
200 L	30						1125	1146		1206	1138																									1159	1224	1270	840	550	610	100	65	45	25	321																							
200 L	30	1125	1146	1206	1138	1159			1224										1270	840		550	610	100	65	45	25	321																																									
200 L	30											1125	1146	1206	1138	1159	1224	1270			840								550	610	100	65	45	25	321																																		
200 L	30						1125	1146		1206	1138																									1159	1224	1270	840	550	610	100	65	45	25	321																							
200 L	30	1125	1146	1206	1138	1159			1224										1270	840		550	610	100	65	45	25	321																																									
200 L	30											1125	1146	1206	1138	1159	1224	1270			840								550	610	100	65	45	25	321																																		
200 L	30						1125	1146		1206	1138																									1159	1224	1270	840	550	610	100	65	45	25	321																							
200 L	30	1125	1146	1206	1138	1159			1224										1270	840		550	610	100	65	45	25	321																																									
200 L	30											1125	1146	1206	1138	1159	1224	1270			840								550	610	100	65	45	25	321																																		
200 L	30						1125	1146		1206	1138																									1159	1224	1270	840	550	610	100	65	45	25	321																							
200 L	30	1125	1146	1206	1138	1159			1224										1270	840		550	610	100	65	45	25	321																																									
200 L	30											1125	1146	1206	1138	1159	1224	1270			840								550	610	100	65	45	25	321																																		
200 L	30						1125	1146		1206	1138																									1159	1224	1270	840	550	610	100	65	45	25	321																							
200 L	30	1125	1146	1206	1138	1159			1224										1270	840		550	610	100	65	45	25	321																																									
200 L	30											1125	1146	1206	1138	1159	1224	1270			840								550	610	100	65	45	25	321																																		
200 L	30						1125	1146		1206	1138																									1159	1224	1270	840	550	610	100	65	45	25	321																							
200 L	30	1125	1146	1206	1138	1159			1224										1270	840		550	610	100	65	45	25	321																																									
200 L	30											1125	1146	1206	1138	1159	1224	1270			840								550	610	100	65	45	25																																			

Dimensions for motor with enclosure IP-55 , make of motor to our choice

(1) Intermediate piece optional

# Foundation Plan for units with spacer type coupling

n=1450 rpm

Dimensions in mm..general tolerances (bedplates) for cast parts to DIN 1686/GTB 17.for welded parts to DIN 8570 B

Pump size	Motor		Base-plate	Cou-pling	Pump-motor references							Base-plate references											Bolts	Weight set																																																																																																																																																																																																																																																																																																																																																																																																																																																																																									
	Size	kW.			a	i (2)	h1	h2	h6	f1	W *	W1	V	+V	V1	W2	h3	P1	P2	c	x																																																																																																																																																																																																																																																																																																																																																																																																																																																																																												
6520	90 L	1,5	S 385	H-95	125	200	180	225	90		1097	1140	740		440	490	80		90		30	M20x400	158																																																																																																																																																																																																																																																																																																																																																																																																																																																																																										
	100 L	2,2							100	125	1138								80					166																																																																																																																																																																																																																																																																																																																																																																																																																																																																																									
		3																					168																																																																																																																																																																																																																																																																																																																																																																																																																																																																																										
	112 M	4							112		1159							68					173																																																																																																																																																																																																																																																																																																																																																																																																																																																																																										
	132 S	5,5							132	90	1219							48					187																																																																																																																																																																																																																																																																																																																																																																																																																																																																																										
	132 M	7,5																					198																																																																																																																																																																																																																																																																																																																																																																																																																																																																																										
8026	100 L	3	S 486	H-110	130		225	280	100		1193	1250	840		550	610			125		40		229																																																																																																																																																																																																																																																																																																																																																																																																																																																																																										
	112 M	4							112	175	1214								113					234																																																																																																																																																																																																																																																																																																																																																																																																																																																																																									
	132 S	5,5							132	130	1274							93					248																																																																																																																																																																																																																																																																																																																																																																																																																																																																																										
	132 M	7,5																					259																																																																																																																																																																																																																																																																																																																																																																																																																																																																																										
	160 M	11							160	150	1408							65					299																																																																																																																																																																																																																																																																																																																																																																																																																																																																																										
	160 L	15							180		1532							45					316																																																																																																																																																																																																																																																																																																																																																																																																																																																																																										
8032	180 M	18,5	S 487	H-110	125		250	315				1250	840		550	610			118		40		335																																																																																																																																																																																																																																																																																																																																																																																																																																																																																										
	132 S	5,5							132	130	1269													291																																																																																																																																																																																																																																																																																																																																																																																																																																																																																									
	132 M	7,5																					302																																																																																																																																																																																																																																																																																																																																																																																																																																																																																										
	160 M	11							160	150	1403							90					342																																																																																																																																																																																																																																																																																																																																																																																																																																																																																										
	160 L	15							180	125	1527							70					378																																																																																																																																																																																																																																																																																																																																																																																																																																																																																										
	180 M	18,5							200	110	1585							50					392																																																																																																																																																																																																																																																																																																																																																																																																																																																																																										
8040	180 L	22	S 538	H-125	250	280	355	200		1720	1620	1060	—	600	660	100	—	120		35	M24x400	436																																																																																																																																																																																																																																																																																																																																																																																																																																																																																											
	200 L	30						225	125	1757								80					458																																																																																																																																																																																																																																																																																																																																																																																																																																																																																										
	225 S	37																100					475																																																																																																																																																																																																																																																																																																																																																																																																																																																																																										
	225 M	45						160	180	1538								113					494																																																																																																																																																																																																																																																																																																																																																																																																																																																																																										
								180	140	1662								93					508																																																																																																																																																																																																																																																																																																																																																																																																																																																																																										
																		80					552																																																																																																																																																																																																																																																																																																																																																																																																																																																																																										
10026	112 M	4	S 486	H-110	140	225	280				1250	840		550	610	100	—	55		40		600																																																																																																																																																																																																																																																																																																																																																																																																																																																																																											
	132 S	5,5						112	150	1224								113					620																																																																																																																																																																																																																																																																																																																																																																																																																																																																																										
	132 M	7,5						132	130	1284								93					249																																																																																																																																																																																																																																																																																																																																																																																																																																																																																										
	160 M	11						160	140	1418								65					263																																																																																																																																																																																																																																																																																																																																																																																																																																																																																										
	160 L	15						180	125	1542								45					274																																																																																																																																																																																																																																																																																																																																																																																																																																																																																										
	180 M	18,5																					314																																																																																																																																																																																																																																																																																																																																																																																																																																																																																										
10032	180 L	22	S 487	H-125	250	315				1420	940		550	610	100	—	118		40		331																																																																																																																																																																																																																																																																																																																																																																																																																																																																																												
	200 L	30					132	130	1284								90					350																																																																																																																																																																																																																																																																																																																																																																																																																																																																																											
	225 S	37					160	140	1418								65					367																																																																																																																																																																																																																																																																																																																																																																																																																																																																																											
	225 M	45					180	125	1542								45					287																																																																																																																																																																																																																																																																																																																																																																																																																																																																																											
							200	100	1600								118					338																																																																																																																																																																																																																																																																																																																																																																																																																																																																																											
							225		1637								90					355																																																																																																																																																																																																																																																																																																																																																																																																																																																																																											
12540	132 M	7,5	S 486	H-110	250	315	400	132	130	1284	1250	840		600	660	100	—	118		40		374																																																																																																																																																																																																																																																																																																																																																																																																																																																																																											
	160 M	11						160	140	1418	70								391																																																																																																																																																																																																																																																																																																																																																																																																																																																																																														
	160 L	15						180	125	1542	45								435																																																																																																																																																																																																																																																																																																																																																																																																																																																																																														
	180 M	18,5						200	100	1600	118								506																																																																																																																																																																																																																																																																																																																																																																																																																																																																																														
	180 L	22						225		1637	90								525																																																																																																																																																																																																																																																																																																																																																																																																																																																																																														
	200 L	30						225	125	1757	80								539																																																																																																																																																																																																																																																																																																																																																																																																																																																																																														
12550	225 S	37	S 538	H-140	170	280	355	450	225		1637	1620		600	660	100	—	25		40		583																																																																																																																																																																																																																																																																																																																																																																																																																																																																																											
	225 M	45							132	130	1284	90										649																																																																																																																																																																																																																																																																																																																																																																																																																																																																																											
	250 M	55							160	140	1418	65										669																																																																																																																																																																																																																																																																																																																																																																																																																																																																																											
	280 S	75							180	125	1542	45										872																																																																																																																																																																																																																																																																																																																																																																																																																																																																																											
	280 M	90							200	100	1600	118										1122																																																																																																																																																																																																																																																																																																																																																																																																																																																																																											
									225		1637	90										1172																																																																																																																																																																																																																																																																																																																																																																																																																																																																																											
15032	180 M	18,5	S 608	H-125	280	400	400	180	150	1732	1600	1060		670	730	100	—	135		40		746																																																																																																																																																																																																																																																																																																																																																																																																																																																																																											
	180 L	22						200	130	1790	115								791																																																																																																																																																																																																																																																																																																																																																																																																																																																																																														
	200 L	30						225	170	1877	90								811																																																																																																																																																																																																																																																																																																																																																																																																																																																																																														
	225 S	37						250		1950	65								1011																																																																																																																																																																																																																																																																																																																																																																																																																																																																																														
	225 M	45						280	235	2025	115								1263																																																																																																																																																																																																																																																																																																																																																																																																																																																																																														
	250 M	55						280	235	2025	115								1313																																																																																																																																																																																																																																																																																																																																																																																																																																																																																														
15032	280 S	75	S 609	H-180	170	280	400	280		2075	2200	1740	870	700	750	140	30	135		40		1513																																																																																																																																																																																																																																																																																																																																																																																																																																																																																											
	280 M	90						225	170	1877	90			1593																																																																																																																																																																																																																																																																																																																																																																																																																																																																																																			
	315 S	110						250		2000	65			1750																																																																																																																																																																																																																																																																																																																																																																																																																																																																																																			
	315 M	132						280	235	2025	115			1890																																																																																																																																																																																																																																																																																																																																																																																																																																																																																																			
	315 L	160						225	170	1877	90																																																																																																																																																																																																																																																																																																																																																																																																																																																																																																						
		200						250	150	2000	65																																																																																																																																																																																																																																																																																																																																																																																																																																																																																																						
15032	132 M	7,5	S 607	H-125	280	400	400	132	130	1474	1400	940		670	730	100	—	148		40		426																																																																																																																																																																																																																																																																																																																																																																																																																																																																																											
	160 M	11						160	170	1608	120								463																																																																																																																																																																																																																																																																																																																																																																																																																																																																																														
	160 L	15						180	140	1732	80								480																																																																																																																																																																																																																																																																																																																																																																																																																																																																																														
	180 M	18,5						200	130	1790	55								499																																																																																																																																																																																																																																																																																																																																																																																																																																																																																														
	180 L	22						225	170	1827	1820	1200										513																																																																																																																																																																																																																																																																																																																																																																																																																																																																																											
	200 L	30						225	170	1827	1820	1200										557																																																																																																																																																																																																																																																																																																																																																																																																																																																																																											
15032	225 S	37	S 609	H-140	280	400	400	225	170	1827	1820	1200		670	730	100	—	55		40		623																																																																																																																																																																																																																																																																																																																																																																																																																																																																																											
	225 M	45																	643																																																																																																																																																																																																																																																																																																																																																																																																																																																																																														



## Foundation Plan for units with spacer type coupling

n=1450 rpm

Dimensions in mm.,general tolerances (bedplates) for cast parts to DIN 1686/GTB 17,for welded parts to DIN 8570 B

Pump size	Motor		Base-plate	Coupling	Pump-motor references							Base-plate references										Bolts	Weight set						
	Size	kW.			a	i (2)	h1	h2	h6	f1	W *	W1	V	+V	V1	W2	h3	P1	P2	c	x								
20032	160 L	15	S 608	H-125	200	300	315	450	160	150	1638	1600	1060	—	670	730	100	—	155	40	180	M24x400	503						
	180 M	18,5							180	140	1762								135				522						
	180 L	22							200		1820	1820	1200						115				536						
	200 L	30	S 609	H-140					225	200	1857								90				598						
	225 S	37							250	170	1980	2200	1740	870	700	750	140	30	65				646						
	225 M	45							280	275	2055								20				666						
	250 M	55										2200	1740	870	700	750	140	30					879						
	280 S	75	220x75x14	H-180																			1121						
20040	180 L	22	S 609	H-160			355	500	180		1812	1820	1200	—	670	730	100	—	175	40		M24x400	658						
	200 L	30							200	200	1870								155				702						
	225 S	37							225	170	1907								130				747						
	225 M	45							250	150	2030												767						
	250 M	55							280		2105	2250	1790	895	700	750	140	30	105	20		M16x250	967						
	280 S	75	225x75x14	H-180							275												1221						
	280 M	90	240x82x14	H-200					315		2240								70				1271						
	315 S	110									2380												1460						
	315 M	132									2550												1540						
	315 L	160	255x82x14								2030												1700						
20050	250 M	55	225x80x14	H-160			400	530	250	300	2105	2250	1790	895	750	800			180	20			1125						
	280 S	75		H-180					280		2105								150				1307						
	280 M	90	240x82x14	H-200							275	2240	2400	1900	950	770			820					1357					
	315 S	110																						1545					
	315 M	132																						1625					
		160							315		2380								115	1805									
	315 L	200	255x82x14									2550	2050	1025						1945									

Dimensions for motor with enclosure IP-55 , make of motor to our choice

(1) Intermediate piece optional

## Product identification

Series + sizes	Impeller type	Hydraulic	Bearing	Shaft sealing	Material	Casing design
	D triple channel impeller Z double channel impeller F free-flow impeller	A	B: Pump end: one cylindrical roller bearing to DIN 5412 Drive end: one deep groove ball bearing to DIN 625 grease lubrication C: Pump end: one cylindrical roller bearing to DIN 5412 Drive end: one deep groove ball bearing to DIN 625 oil lubrication S: Pump end: one cylindrical roller bearing to DIN 5412 Drive end: two angular contact ball bearings in O-arrangement. grease lubrication T: Pump end: one cylindrical roller bearing to DIN 5412 Drive end: two angular contact ball bearings in O-arrangement. oil lubrication	051* 052 071 BKS BKW	0B main parts of cast iron 0E main part of cast iron, but impeller, wear plate of stainless steel 4B main parts of stainless steel	B with wear plate C without wear plate
DBSA 03216 03220 04016 04020 05016 05020 05026 05032 06520 08026 08032 08040 10026 10032 12540 12550 15032 20032 20040 20050 30040	F D/F Z/F D/F Z/F Z Z/F D/F D Z D	A	B, C S, T	Alternativ 051 052 071** BKS BKW	Alternativ 0B 0E 4B	C B

\* see page 2 under shaft sealing

\*\* not valid for sizes 3216 and 3220

If we are informed of the motor type being selected, the coupling can be supplied already drilled on motor side and we can supply the coupling guard and the shims for equalizing out the centre height.

**STERLING**

