

### DIMENSIONS

NOZZLE SIZE (BSPT)	Dim. D (mm)	Dim. H (mm)	Dim. L (mm)
1/8S	16	14	21
1/4S	16	14	24
3/8S	20	17	28
1/8SW	16	14	16
1/4SQ	16	14	21
1/4SQ	20	14	24

### FITTING SIZES:

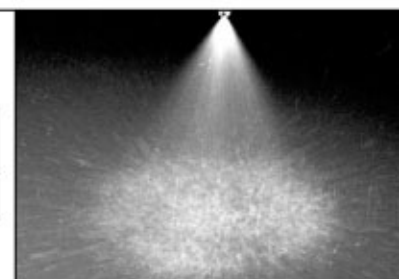
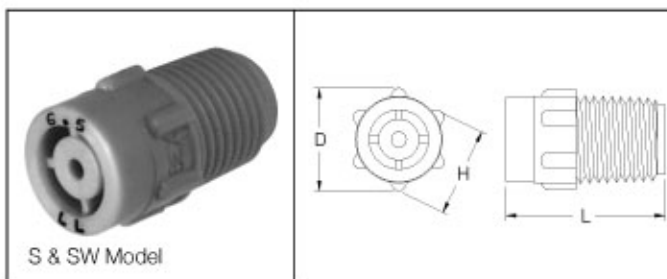
1/8", 1/4" and 3/8" MALE BSPT (NPT also available)

STANDARD MODELS LISTED IN TABLES BELOW.

ADDITIONAL MODELS MAY BE AVAILABLE UPON REQUEST.

### TYPICAL APPLICATIONS:

- Printed Circuit Board Washing
- PCB-Etching/Developing
- Semiconductor Manufacturing
- Carpet Cleaning
- Fruit and Vegetable Washing
- Plating Processes
- Dust Suppression
- Acid Spraying
- Degreasing
- Coating Applications
- Metal Washing
- Chemical Spraying
- Rinsing Parts



### SPRAY CHARACTERISTICS:

These models produce a full cone spray pattern with spray angles of 60° to 120° @ 0.7 bar.

PVDF - excellent durability and abrasion resistance and is inert to most chemicals. Many applications useful up to 150°C.

### CONSTRUCTION:

Each BEX molded nozzle is designed with a series of "knobs" which makes them easier to finger tighten than a hex, especially when wet. The design feature of a small starter barrel greatly reduces the tendency to strip or cross-thread the nozzle during installation.

Natural PVDF - where solution purity must be

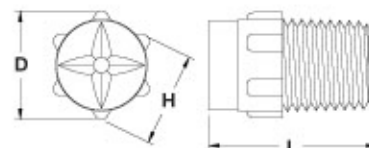
SQ Model

optimized.



### MATERIALS AVAILABLE:

Polypropylene - excellent chemical and corrosion resistance. Useful up to 80°C.



Natural Polypropylene - non-pigmented for optimum purity.

### MOLDED PLASTIC S SERIES FULL CONE SPRAY MODELS (For capacity and spray angle data please refer to table on page 21)

1/8 Models	1/8S1	1/8S1.5	1/8S3	1/8S3.5	1/8S5	1/8S6
1/4 Models	1/4S6.5	1/4S7.5	1/4S10			
3/8 Models	3/8S10	3/8S15	SN4780 (70° spray angle/5.7 L/min @ 2.8 bar)			

### MOLDED PLASTIC SW WIDE ANGLE FULL CONE SPRAY MODELS (For capacity and spray angle data please refer to table on page 23)

1/8 Models	1/8S2.8W	1/8S4.3W	1/8S5.6W	1/8S8W
1/4 Models	1/4S5.6W	1/4S10W	1/4S12W	1/4S14W

### MOLDED PLASTIC SQ SERIES FULL CONE SPRAY MODELS (For capacity and spray angle data please refer to table on page 24)

1/8 Models	1/8S4.8SQ	1/8S5SQ		
1/4 Models	1/4S6SQ	1/4S10SQ	1/4S12SQ	1/4S14SQ