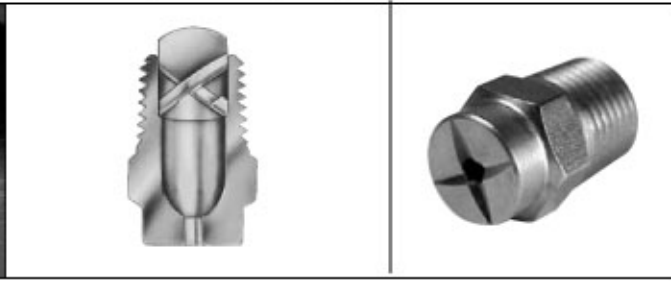
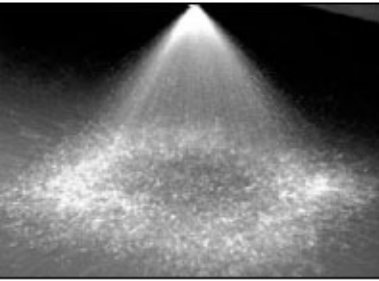


SQ SERIES

Full square spray nozzles



-SPRAY CHARACTERISTICS:

Full cone spray pattern, with uniform distribution throughout the approximately square cone.

CONSTRUCTION:

Standard materials are brass, 303 and 316 stainless. Larger sizes in cast 316 or 303 stainless bar. Some models are also stocked in plastics and other materials.

TYPICAL APPLICATIONS:

- Chemical Processing
- Cooling Sprays
- Continuous Casting

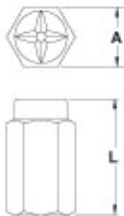
Please see page 29 for molded plastic models.

SQ SERIES

One piece body + non-removable insert

DIMENSIONS

NOZZLE SIZE (BSPT)	Dim. A (mm)	Dim. L (mm)
1/8SQ	11 HEX	21
1/4SQ	14 HEX	24
3/8SQ	17 HEX	29
1/2SQ	22 HEX	33
3/4SQ	27 HEX	52
1FSQ	38 dia.	67
1 1/4FSQ	48 dia.	89
1 1/2FSQ	57 dia.	108
2FSQ	70 dia.	138
2 1/2FSQ	89 dia.	175

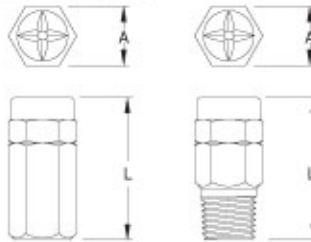


GSQ SERIES

Two piece body + removable insert

DIMENSIONS

NOZZLE SIZE (BSPT)	Dim. A (mm)	Dim. L (mm)
1/4GSQ	16 HEX	33
1/2GSQ	18 HEX	40
3/4GSQ	21 HEX	43
1GSQ	26 HEX	51
1 1/4FGSQ	16 HEX	33
1 1/2FGSQ	18 HEX	42
2FGSQ	21 HEX	48
2 1/2FGSQ	26 HEX	53



SQ one piece body	GSQ two piece body		PIPE SIZE BSPT	MAXIMUM FREE PASSAGE (mm)	CAPACITY (L/min) AT VARIOUS PRESSURES (bar)												Spray Angle @		
	FEMALE	MALE			0.3 bar	0.5 bar	0.7 bar	1 bar	1.5 bar	2 bar	3 bar	4 bar	5 bar	6 bar	8 bar	0.5 bar	1.5 bar	5 bar	
1/8SQ	1/8FGSQ	1/8GSQ	1/8	1.45	--	1.16	1.37	1.64	2.01	2.32	2.84	3.3	3.7	4.0	4.6	42°	55°	50°	
1/4SQ	1/4FGSQ	1/4GSQ	1/4	1.63	--	1.55	1.83	2.19	2.68	3.09	3.8	4.4	4.9	5.4	6.2	50°	65°	60°	
3/8SQ	3/8FGSQ	3/8GSQ	3/8	2.06	--	1.93	2.29	2.73	3.3	3.9	4.7	5.5	6.1	6.7	7.7	30°	65°	60°	
1/4S6SQ	1/4FGS6SQ	1/4GS6SQ	1/4	2.06	1.50	1.93	2.29	2.73	3.3	3.9	4.7	5.5	6.1	6.7	7.7	60°	65°	60°	
1/4S10SQ	1/4FGS10SQ	1/4GS10SQ	1/4	2.31	2.50	3.2	3.8	4.6	5.6	6.4	7.9	9.1	10.2	11.2	12.9	61°	67°	60°	
1/4S12SQ	1/4FGS12SQ	1/4GS12SQ	1/4	2.31	3.00	3.9	4.6	5.5	6.7	7.7	9.5	10.9	12.2	13.4	15.5	71°	76°	69°	
1/4S14SQ	1/4FGS14SQ	1/4GS14SQ	1/4	2.31	3.5	4.5	5.3	6.4	7.8	9.0	11.1	12.8	14.3	15.6	18.0	78°	85°	75°	
3/8S18SQ	3/8FGS18SQ	3/8GS18SQ	3/8	2.59	4.5	5.8	6.9	8.2	10.0	11.6	14.2	16.4	18.3	20.1	23.2	70°	75°	68°	
1/2S29SQ	1/2FGS29SQ	1/2GS29SQ	1/2	3.66	7.2	9.3	11.1	13.2	16.2	18.7	22.9	26.4	29.6	32	37	70°	75°	68°	
1/2S36SQ	1/2FGS36SQ	1/2GS36SQ	1/2	3.66	9.0	11.6	13.7	16.4	20.1	23.2	28.4	33	37	40	46	80°	85°	77°	
3/4S50SQ			3/4	4.95	12.5	16.1	19.1	22.8	27.9	32	39	46	51	56	64	70°	75°	68°	
1FS106SQ			1	5.56	26.5	34	40	48	59	68	84	97	108	118	137	77°	80°	72°	
1 1/4FS177SQ			1 1/4	6.60	44	57	67	81	99	114	140	161	180	198	228	77°	80°	72°	
1 1/2FS230SQ			1 1/2	9.96	57	74	88	105	128	148	182	210	234	257	296	74°	79°	72°	
2FS290SQ			2	11.13	72	93	111	132	162	187	229	264	296	324	374	65°	70°	65°	
2FS360SQ			2	11.13	90	116	137	164	201	232	284	328	367	402	464	70°	75°	70°	
2FS480SQ			2	11.13	120	155	183	219	268	309	379	438	489	536	619	78°	80°	76°	
2 1/2FS590SQ			2 1/2	13.49	147	190	225	269	329	380	466	538	601	659	761	75°	80°	73°	

FULL CONE SPRAY

Wide angle full square nozzles

SWSQ SERIES

SPRAY CHARACTERISTICS:

Full cone wide angle spray pattern, with uniform distribution through the approximately square cone.

CONSTRUCTION:

Standard materials are brass, 303 and 316 stainless steel. Some models are

also stocked in other materials. See page 31 for PSWSQ plastic wide angle full square nozzles in larger capacities.

TYPICAL APPLICATIONS:

Same as full square (pg. 26) but for applications where a wider angle is required.



'SWSQ' one piece body		PIPE SIZE BSPT	MAXIMUM FREE PASSAGE (mm)	CAPACITY (L/min) AT VARIOUS PRESSURES (bar)												Spray Angle @		
FEMALE	MALE			0.3 bar	0.5 bar	0.7 bar	1 bar	1.5 bar	2 bar	3 bar	4 bar	5 bar	6 bar	8 bar	0.5 bar	1.5 bar	5 bar	
	1/4S14WSQ	1/8	2.31	3.5	4.5	5.3	6.4	7.8	9.0	11.1	12.8	14.3	15.6	18.0	99°	95°	84°	
	3/8S17WSQ	3/8	2.59	4.2	5.5	6.5	7.7	9.5	11.0	13.4	15.5	17.3	19.0	21.9	98°	94°	82°	
	3/8S20WSQ	3/8	2.59	5.0	6.4	7.6	9.1	11.2	12.9	15.8	18.2	20.4	22.3	25.8	102°	102°	86°	
	3/8S24WSQ	3/8	2.59	6.0	7.7	9.2	10.9	13.4	15.5	18.9	21.9	24.5	26.8	30.9	104°	102°	86°	
	3/8S27WSQ	3/8	2.59	6.7	8.7	10.3	12.3	15.1	17.4	21.3	24.6	27.5	30.1	35	104°	102°	87°	
	1/2S30WSQ	1/2	3.66	7.5	9.7	11.4	13.7	16.7	19.3	23.7	27.3	30.6	33	39	100°	96°	85°	
	1/2S35WSQ	1/2	3.66	8.7	11.3	13.3	16.0	19.5	22.6	27.6	32	36	39	45	104°	99°	88°	
	1/2S40WSQ	1/2	4.11	10.0	12.9	15.3	18.2	22.3	25.8	32	36	41	45	52	106°	104°	90°	
	1/2S45WSQ	1/2	4.11	11.2	14.5	17.2	20.5	25.1	29.0	36	41	46	50	58	106°	104°	94°	
3/4FS50WSQ	3/4S50WSQ	3/4	4.95	12.5	16.1	19.1	22.8	27.9	32	39	46	51	56	64	108°	102°	97°	
3/4FS71WSQ	3/4S71WSQ	3/4	4.95	17.7	22.9	27.1	32	40	46	56	65	72	79	92	99°	102°	93°	
1FS130WSQ	1S130WSQ	1	5.56	32	42	50	59	73	84	103	119	132	145	168	102°	107°	99°	
1 1/4FS190WSQ		1 1/4	6.60	47	61	72	87	106	122	150	173	194	212	245	104°	105°	102°	
1 1/2FS290WSQ		1 1/2	8.36	72	93	111	132	162	187	229	264	296	324	374	107°	107°	102°	
2FS560WSQ		2	11.1	140	180	214	255	313	361	442	510	571	625	722	107°	107°	99°	
2 1/2FS830WSQ		2 1/2	13.5	207	267	317	378	463	535	655	757	846	927	1070	104°	105°	102°	
3FS1070WSQ		3	17.5	267	345	408	488	597	690	845	975	1090	1195	1379	107°	105°	105°	

DIMENSIONS

NOZZLE SIZE (BSPT)	Dim. A (mm)	Dim. L (mm)
1/4SWSQ	14 HEX	24
3/8SWSQ	17 HEX	30
1/2SWSQ	22 HEX	37
3/4FSWSQ	32 HEX	56
3/4SWSQ	27 HEX	43
1FSWSQ	38 HEX	67
1SWSQ	35 HEX	52
1 1/4FSWSQ	48 dia.	95
1 1/4SWSQ	57 dia.	108
2FSWSQ	70 dia.	149
2 1/4FSWSQ	92 dia.	165
3FSWSQ	102 dia.	197

FULL CONE SPRAY